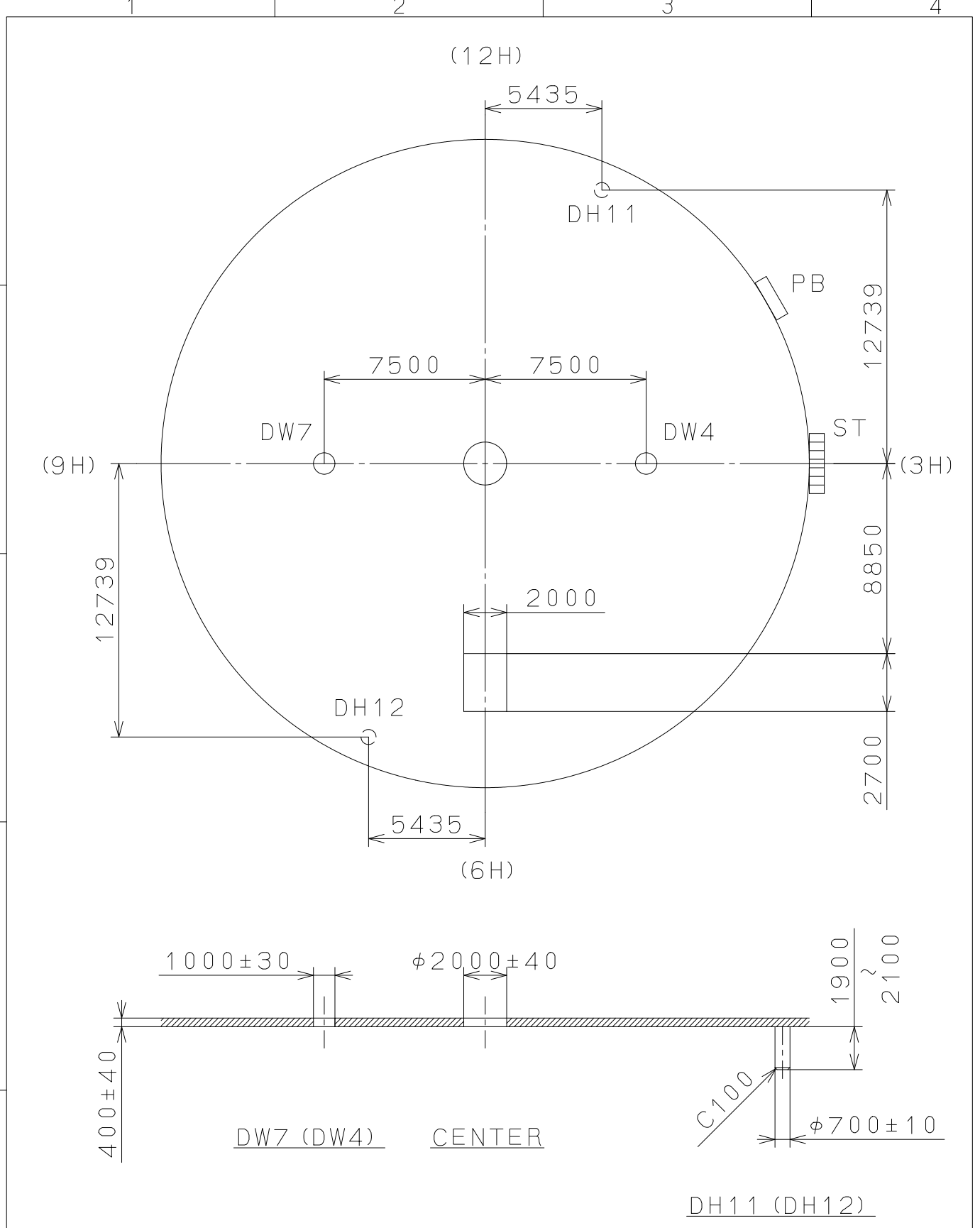


This drawing is provisional and subject to our reconfirmation and/or revision without notice.

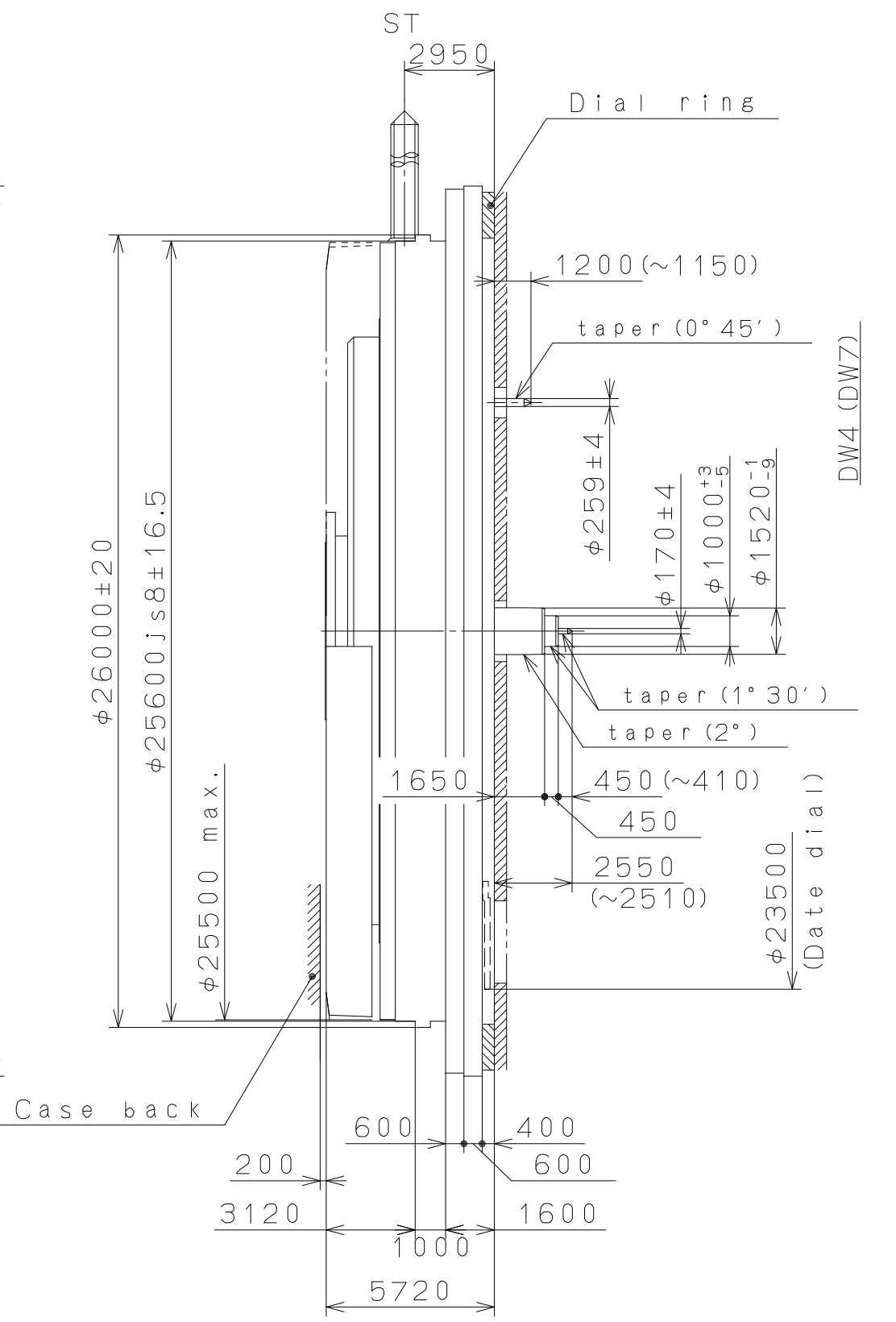
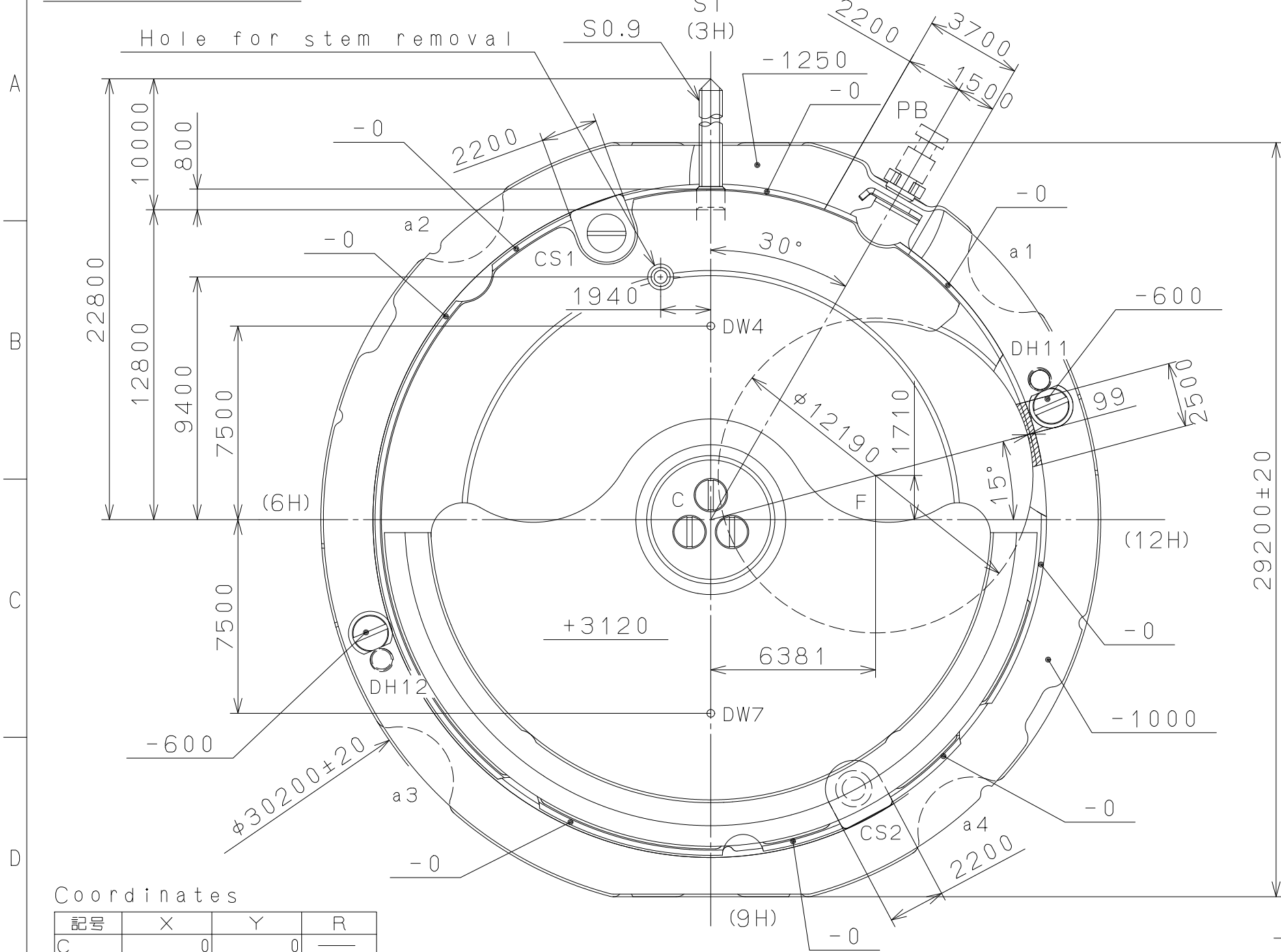


△			Quantity		Cal.NO.:
△			Unit	1 / 1000 mm	9122-20A
△			Scale	4 : 1	Parts No.:
△			Date		
△			Drawn		
Mark	Date	Description	Appro.	Checked	E. Murakami
Alterations			Approved	Name:	
Material					Indications for Dial
Heat Treatment					Drawing No.: 9122D000
Hardness					<b>MIYOTA</b>
Plating					

CONFIDENTIAL 2014/08/13 (11:34:31)

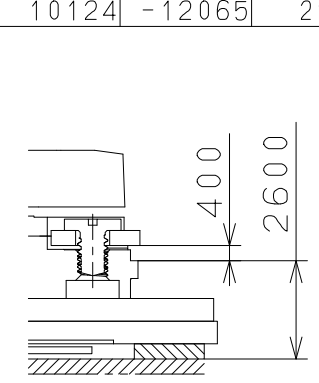
This drawing is provisional and subject to our reconfirmation and/or revision without notice.

DH11~DH12=26800

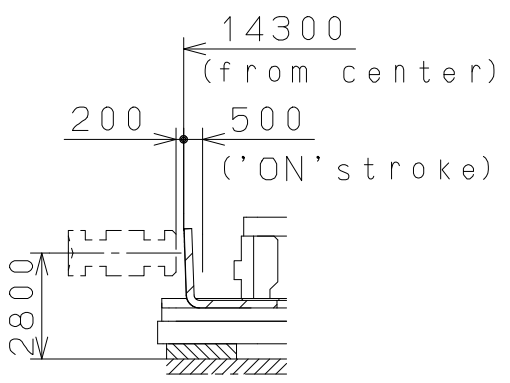


Coordinates

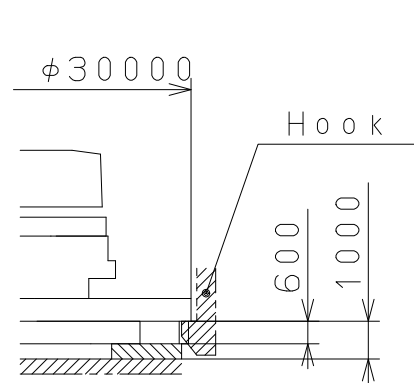
記号	X	Y	R
C	0	0	—
DH11	12739	5435	—
DH12	-12739	-5435	—
a1	12065	10124	2100
a2	-10124	12065	2100
a3	-12065	-10124	2100
a4	10124	-12065	2100



Section CS1,CS2



Section PB



Section a1~a4

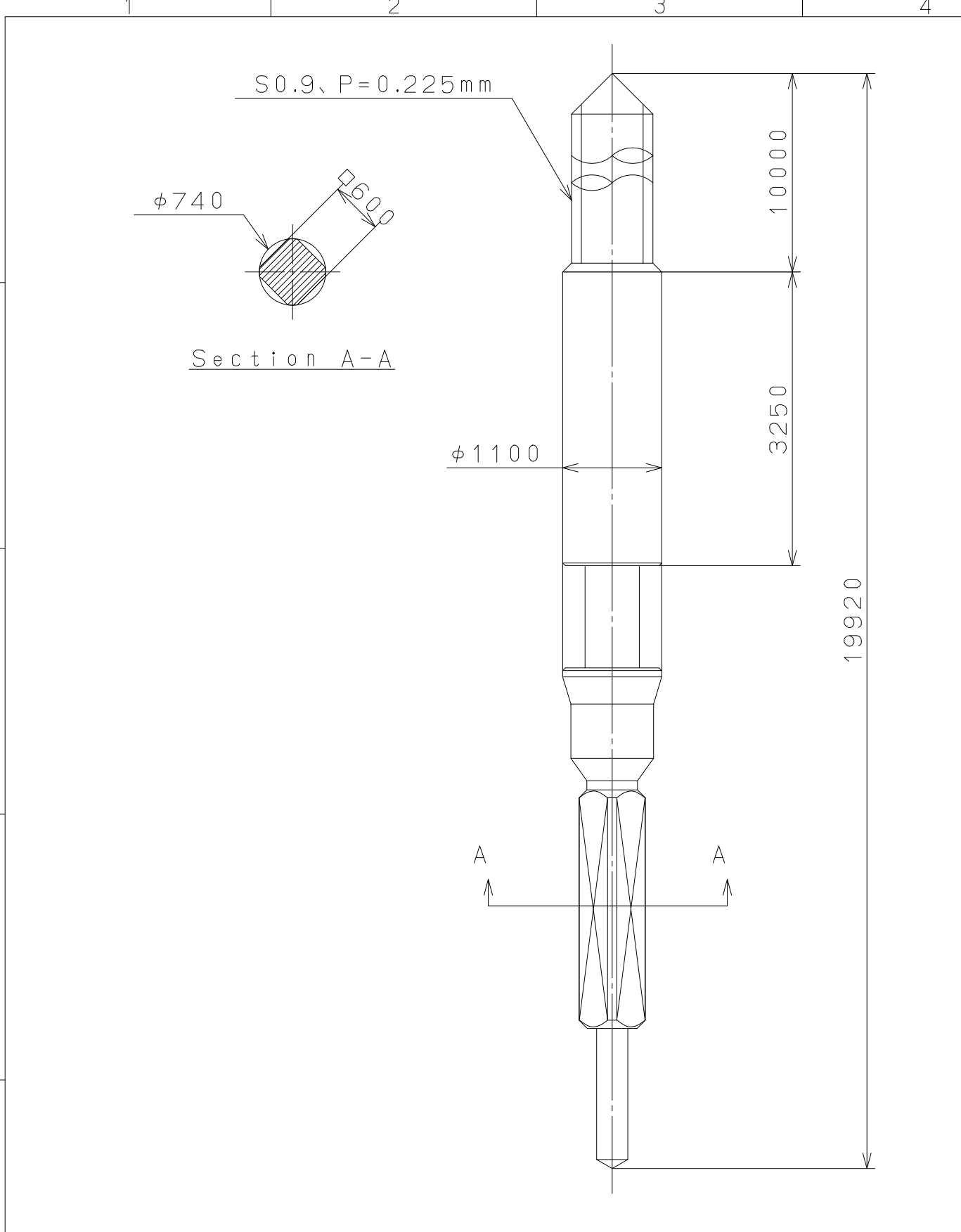
△5		Quantity		Cal.NO.:	
△4		Unit	1/1000mm		9122
△3		Scale	5 : 1	Parts No.:	
△2		Date			
△1		Drawn			
Mark	Date	Description	Appr.	Checked	E. Murakami
Alterations				Approved	
Material				Name:	
Heat Treatment				Frame for Case	
Hardness				Drawing No.:9122C000	
Plating				General Tolerances	
				Dimensions	
				Angles	

**MIYOTA**

CITIZEN WATCH CO.,LTD. TOKYO,JAPAN

2009/03/19 (15:03:29)

This drawing is provisional and subject to our reconfirmation and/or revision without notice.



△5			Quantity		Cal.NO.:
△4			Unit	1/1000mm	
△3			Scale	17:1	Parts No.:
△2			Date		065-A05
△1			Drawn		
Mark	Date	Description	Appr.	Checked	Name:
		Alterations		Approved	SETTING STEM
Material					Drawing No.: A050S000
Heat Treatment			General	Tolerances	<b>MIYOTA</b>
Hardness			Dimensions		
Plating			Angles		
					CITIZEN WATCH CO., LTD. TOKYO, JAPAN